



...Meeting
GLOBAL Standards

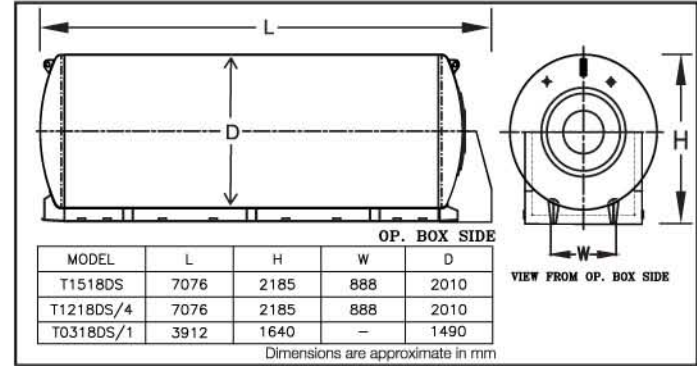
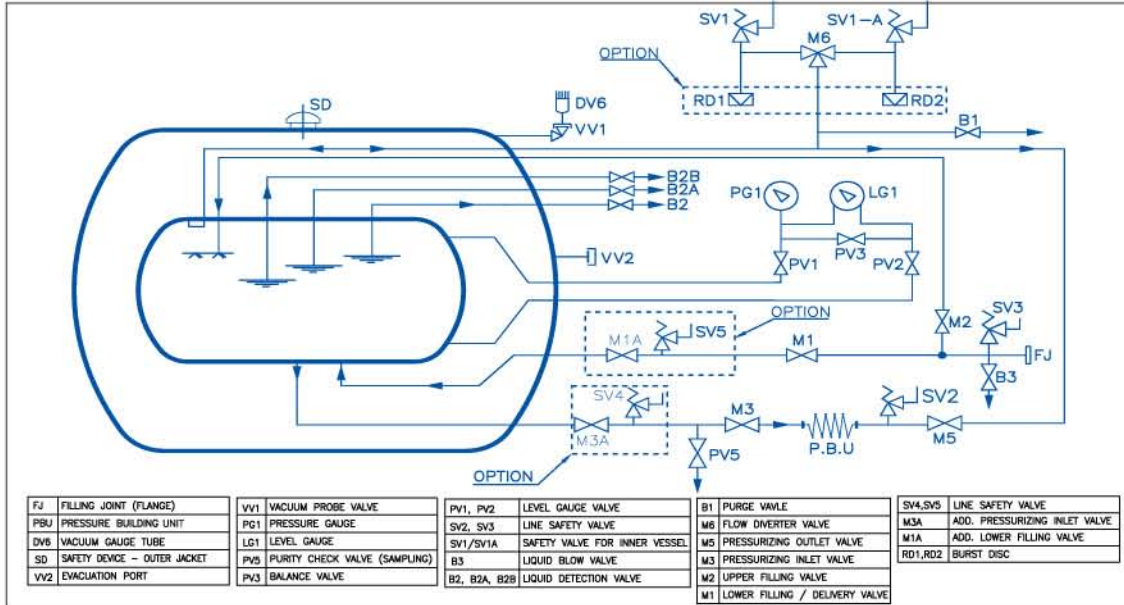


T
R
A
N
S
P
O
R
T

T
A
N
K



- ✓ Transport tank for LIN, LOX & LAR service
- ✓ Rugged design for optimized & maximum payload
- ✓ Reliable support system for rough road conditions
- ✓ Efficient Perlite or Multilayer Super Insulation ensures better efficiency
- ✓ Ease of access, operation & maintenance with ergonomic pipe work
- ✓ Inner Vessel Stainless Steel SS304



Features

- Rugged & ergonomic rear operational valve box cabinet
- High quality surface & paint finish
- Inner Vessel safety valve with flow diverter valve for maintenance without depressurization
- Sampling point
- Cavitation free plumbing and SS body valves
- Bellow sealed vacuum probe valve with gauge tube covered for protection
- SS lifting hooks

Optionals

- Low pressure tanks fitted with transfer pumps
- Cold test with Liquid Nitrogen
- Rupture discs or Safety valves as secondary safety device
- Fire control or Emergency shutoff valve
- Flow meter and Printer
- Stainless Steel Outer Vessel
- Additional isolation valves in liquid lines (M1A, M3A)
- Noise eliminator
- Stainless Steel braided hose, suitable for O2 Service (~4m)
- Flexibility of design codes (European, American, Australian)
- Perlite insulation
- Spare Wheel

Standard Product matrix for Transport Tanks

Truck Chassis	25 TON-three axles			31 TON-four axles		MICROBULK-two axles		
	LIN	LOX	LAR	LOX	LAR	LIN	LOX	LAR
Specification	T1518DS	T1218DS/4	T1218DS/4	T1518DS	T1218DS/4	T0318DS/1	T0318DS/1	T0318DS/1
Gross volume (ltrs)	14505	11960	11960	14505	11960	3190	3190	3190
Max Net volume (ltrs)	13779	11122	11122	13779	11362	3030	3030	3030
Tare weight (kg)	7000	5850	5850	7000	5850	2500	2500	2500
Pay load (kg)	LIN	11720 (95% filling)	-	-	-	2448 (95% filling)	-	-
	LOX	10592 (84% filling)	12691 (93% filling)	-	15721 (95% filling)	-	3457 (95% filling)	-
	LAR	-	12690 (76% filling)	12690 (76% filling)	15715 (77.5% filling)	15884 (95% filling)	-	4235 (95% filling)

- Inner vessel austenitic stainless steel, designed to AD 2000 Merkblatter. Outer vessel carbon steel designed to CGA 341
- Specifications can change as per chassis selection and country road regulation
- Support for selection of suitable chassis available on request
- Tanks optimized for specific liquid and/or chassis available on request
- Specifications are subject to change due to continuous product development/ up-gradation without prior notice



• Storage Tanks • Cold Convertors • Transport Tanks • ISO Tank Containers • Cryo Containers • Flat bottom Tanks • Engineered Tanks
 • Vaporisers • Vacuum Jacketted Piping • Turnkey Cryogenic Systems • Disposable Cylinders • CO₂ Dry Cleaning Machine



Time Tested Performance...



INOX INDIA LTD.
 ABS Tower, 4th Floor,
 Old Padra Road,
 Vadodara 390 007, INDIA. Web : www.inoxindia.com

Tel : +91 (265) 3056100 / 2343125
 Fax : +91 (265) 2341449 / 2333398
 E-mail : mktg@inoxindia.com