



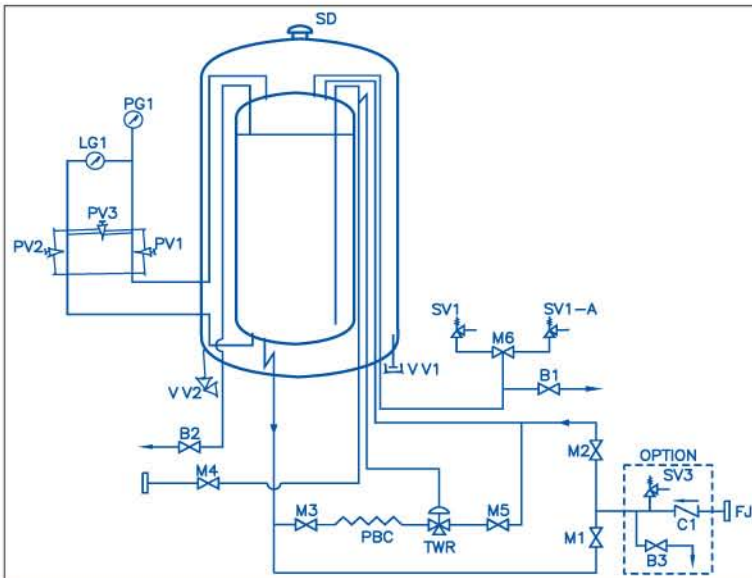
...Meeting
GLOBAL Standards



P
O
R
T
A
C
R
Y
O



- ✓ Portable Cryostorage units suitable for LIN, LOX, LAR & LCO₂ service
- ✓ Rugged steel frame protects all sides
- ✓ Highly efficient super insulation ensures efficient performance
- ✓ Special design ensures low filling losses
- ✓ Long stem globe valves provide ease in operation
- ✓ "Ready to use" units in vertical and horizontal options



C1	CHECK VALVE
B3	DRAIN VALVE
SV3	THERMAL RELIEF VALVE
B1	GAS WITHDRAWAL VALVE
V V2	EVACUATION PORT
V V1	VACUUM PROBE VALVE
FJ	FILLING JOINT
LG	LEVEL GAUGE
PG	PRESSURE GAUGE
PV1,PV2,PV3	LEVEL GAUGE VALVE
SV1,SV1A	I/V SAFETY VALVE
B2	OVERFLOW VALVE/VENT VALVE
TWR	THREE WAY REGULATOR
M6	FLOW DIVERTER VALVE
M5	VAPOUR RETURN
M4	LIQ. DELIVERY VALVE
M3	PRESSURE BUILDING COIL INLET
M2	TOP FILLING
M1	BOTTOM FILLING
SD	SAFETY DEVICE OUTER JACKET
PBC	PRESSURE BUILD COIL

TECHNICAL SPECIFICATIONS FOR PORTACRYO

DESCRIPTION	UNIT	0.5 KL	1.0 KL	1.5 KL	2.0 KL
GROSS / NET VOLUME	LIT	491/467	995/945	1506/1431	2021/1920
STORAGE CAPACITY	LIN	kg (Nm ³)	764 (610)	1156 (924)	1551 (1240)
	LOX	kg (Nm ³)	533 (373)	1078 (755)	1633 (1143)
	LAR	kg (Nm ³)	653 (366)	1321 (740)	2001 (1121)
	LCO2	kg (Nm ³)	474 (240)	995 (503)	1507 (761)
OPERATIONAL FEATURES					
NET EVAPORATION RATE, LIN	% / day at STP	1.6	1.3	1.0	0.8
	LOX & LAR	1.0	0.8	0.6	0.5
WEIGHTS & DIMENSIONS					
EMPTY WEIGHT [APPROX]	19 kg/cm ² g	kg	990	1400	1700
	24 kg/cm ² g	kg	650	1035	1475
	34 kg/cm ² g	kg	-	1070	1575
OVERALL FRAME SIZE L x W x H	mm	1420 x 1136 x 1850	1600 x 1295 x 2185	1900 x 1600 x 2185	2100 x 1800 x 2185

- Inner vessel austenitic stainless steel, designed to AD 2000-PED / ASME. Outer vessel carbon steel designed to CGA 341
- Withdrawal rate 30~60 Nm³/hour • Portability in filled condition for tanks up to 1 KL capacity
- Specifications are subject to change due to continuous product development/ upgradation without prior notice



- Storage Tanks • Cold Convertors • Transport Tanks • ISO Tank Containers • Cryo Containers • Flat bottom Tanks • Engineered Tanks
- Vaporisers • Vacuum Jacketed Piping • Turnkey Cryogenic Systems • Disposable Cylinders • CO₂ Dry Cleaning Machine



Time Tested Performance...



INOX INDIA LTD.
 ABS Tower, 4th Floor,
 Old Padra Road,
 Vadodara 390 007, INDIA.

Tel : +91 (265) 3056100 / 2343125
 Fax : +91 (265) 2341449 / 2333398
 E-mail : mktg@inoxindia.com
 Web : www.inoxindia.com

Features

- Combines all features of a customer station tank and liquid cylinder
- Product portability supports the option of being filled by Transport tanks at customer location / sites OR carried to ASU / bulk storage locations for filling
- Convenient handling by forklift, mobile crane, chain pulley or overhead crane
- High capacity regulator & PBU ensures continuous gas delivery with high purity
- Optional product vaporiser mounted on frame, provides continuous gas supply
- Steel plate frame protects valves, gauges and piping
- Stable base, for placing on levelled surface. Civil foundation not essential
- Ideal for 'temporary user points' application
- 100 mm (4") dia level & pressure gauge provide accurate measurement
- Flow diverter valve provides safety valve isolation for maintenance

Optionals

- Frame mounted product vaporizer or distribution manifold
- Rupture disc as secondary safety devices
- Customized filling and delivery connections
- Vacuum gauge tube
- Digital level measurements
- Check valve in filling line
- Stainless Steel outer vessel
- LNG Service



PORTACRYO